

CINAJUS Pty
Ltd
ABN 86 089 623 487

CINAJUS

KOTAH BLUE & KOTAH BROWN



Projects completed using CINAJUS KOTAH STONE:

- Fleetview and Regatta Wharf at Jacksons Landing
- Rhodes Waterside Stage 1 and 2
- Cremorne Plaza
- Quad 2 and Quad 3 at Homebush
- Pacific Square at Maroubra

Amongst a host of others.

ONLY NATURAL STONES. Limestone, Sandstone, Granite, Quartzite and more.

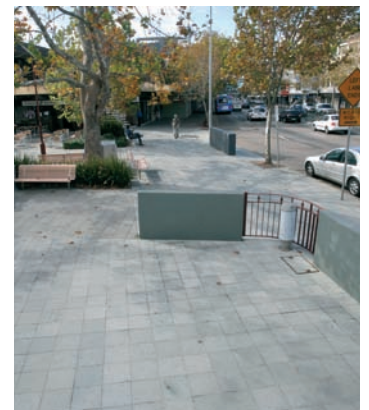
IN ORDER TO SERVE YOU BETTER PRESENTATIONS ARE BY APPOINTMENT ONLY.

Tel: 02 9773 5677 Fax: 02 9773 5644

Email: info@cinajus.com Online Catalogue: www.cinajus.com

CINAJUS KOTAH BLUE

PAVERS, TILES, COBBLESTONES, BULLNOZED, POOL COPERS, STEP TREADS, ROCKFACE & MORE.



Pavers

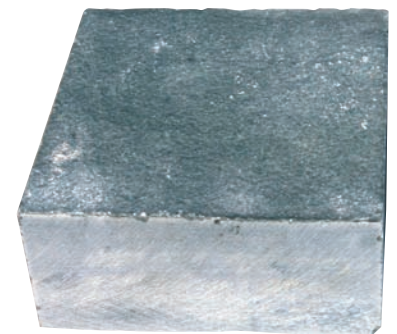
CINAJUS KOTAH BLUE ROCKFACE

DYO Series



Design Your Own Walls

- LARGE FORMAT: 570 x 285 x 20 – 60mm
- SMALL FORMAT: 570 x 100, 570 x 50, 285 x 100, 285 x 50mm



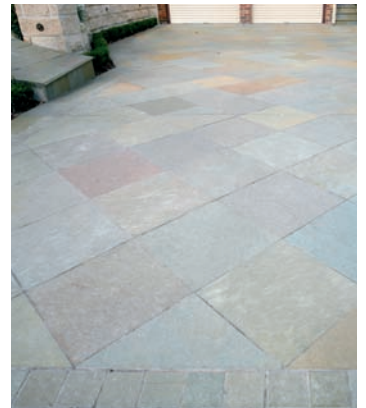
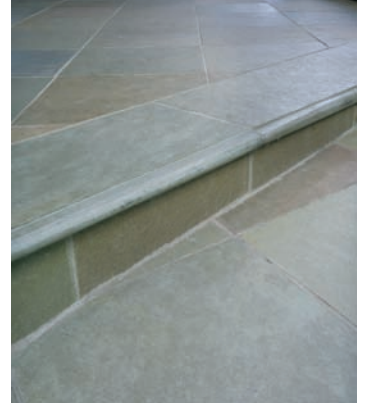
Machine Cut Cobblestones



Hand Cut Cobblestones

CINAJUS KOTAH BROWN

PAVERS, TILES, COBBLESTONES, BULLNOZED, POOL COPERS, STEP TREADS, ROCKFACE & MORE.



Pavers

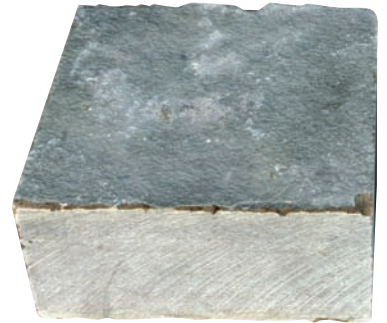
CINAJUS KOTAH BROWN ROCKFACE

DYO Series



Design Your Own Walls

- LARGE FORMAT: 570 x 285 x 20 – 60mm
- SMALL FORMAT: 570 x 100, 570 x 50, 285 x 100, 285 x 50mm



Machine Cut Cobblestones



Hand Cut Cobblestones

CINAJUS KOTAH STONE



Formats Pavers, Tiles, Step Treads, Cobblestones, Pool Copers, Bullnozed, Capping, Rockface.

Sizes

- **Pavers** 400 x 400 x 20^{+/-} 4mm, 600 x 300 x 35^{+/-} 5mm.
- **Cobblestones** 150 x 150 x 35^{+/-} 5mm and 150 x 150 x 70^{+/-} 10mm Hand Cut or Machine Cut.
- **Step Treads or Pool Coping** 1210 x 300 Bullnozed on 1 length.
- **Rock Face** Large format 570 x 285 x 20 – 60mm.
Small format 570 x 100, 570 x 50, 285 x 100, 285 x 50mm.
- **Other Sizes** As per request or ex stock.
- **Customised** Sizes available for volume buyers.

Finishes Natural or Polished. Hand Cut or Machine Cut edges.

Applications Paving, Flooring, Wall Cladding, Retaining Walls, Pool Surrounds, Step Treads, Patios, Balconies, Driveways, Internals and Externals.

Delivery Ex Stock or 10 – 12 weeks.

Benefits of using Cinajus Kotah Stone Products

- **Tested** according to Australian Standards for Slip Resistance in Wet and Dry Conditions.
 - **Salt and Chlorine Safe**, making it an ideal material for pool surrounds and ocean front paving and walling areas.
 - Compressive **Strength** and Braking **Load** greater than most man-made pavers.
 - **Combine** colours, finishes, formats and sizes for indoor – outdoor.
 - **Same stone** in different thickness, formats and finishes can be used in different areas of your project making it architecturally and aesthetically symmetrical, yet cost effective.
 - **100%** Natural and Environmentally friendly.
 - **Timeless beauty**, hard wearing and long lasting materials that will enhance and maintain the value of your Commercial, Residential or Public Domain investment for a very long time.
-

Disclosure

Cinajus Natural Stones are a product of nature and buyers should expect some degree of variation in test results, dimension sizes, colours and thickness over and above the specifications, samples and information provided. The tests conducted and the results are general characteristics of Cinajus Natural Stones. We recommend that you test the material for suitability for individual projects and applications. Sealing is recommended.